

LENNOX
Innovation never felt so good.®

complete control



Thermostats
and Zoning
Systems

Connect to your thermostat your way



Redefining control and comfort

It's time to rethink everything you know about thermostats. Lennox' icomfort Wi-Fi thermostat is a brilliant piece of technology that gives you total remote comfort control. That means you can easily manage your home's temperature and energy efficiency—from anywhere in the world. When connected to your home wireless network, it gives you the ability to monitor and adjust your temperature via your smartphone, tablet, laptop or other web-enabled device. For added ease and convenience, the icomfort Wi-Fi includes features like One-Touch Away Mode, which allows you to save energy when no one's home.

The icomfort App

Free to download for Apple and Android devices, the icomfort App is like a touchscreen window into your home comfort. Whether you're on the road or on the couch, simply start the app to check and change your temperature with only a finger.

The center of everything

When paired with premium Lennox® equipment, icomfort Wi-Fi effortlessly coordinates communication between every component of the system, optimizing energy use and comfort while maintaining your home's temperature with an accuracy of .5 degree. So you enjoy the highest level of comfort Lennox has to offer.



Custom ability to blend in

Customizable skin option and matching screensaver allow you to cover and protect the thermostat interface with any photo or artwork you prefer. You can also choose a color to blend in with your décor or the thermostat screensaver.

Highlights

Remote access.

Control your thermostat from anywhere in the world via your smartphone, tablet, laptop or other web-enabled device.

One-Touch Away mode.

Reduces system use and energy consumption when no one is home.

Alerts and reminders.

Monitors the system with advanced diagnostics and sends you and your dealer emails if the system needs service or maintenance.

Weather data.

Displays live weather alerts and a five-day forecast.

Touchscreen operation.

Bright, clear screen is easy to read in any light, and easy to operate.

Balanced air quality.

Works with your Lennox® system to carefully control both temperature and humidity.

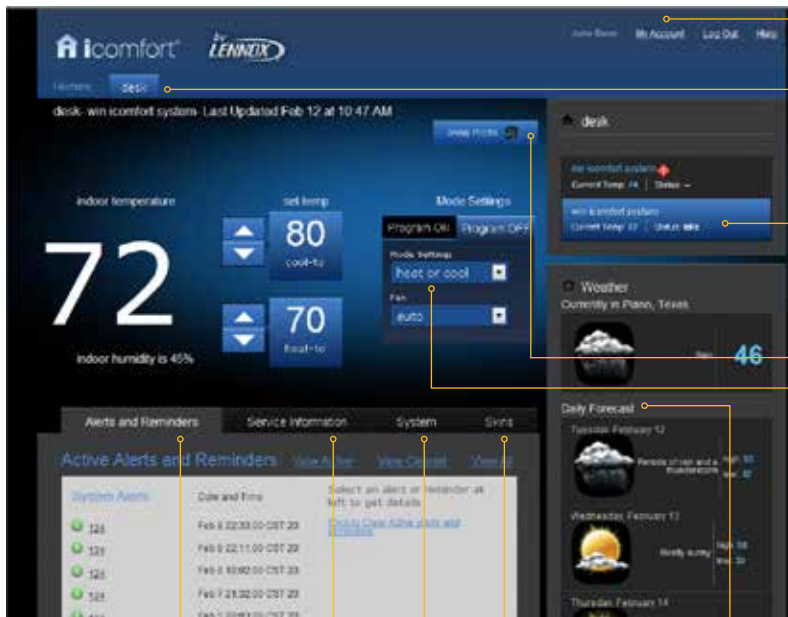
Peace of mind.

Backed by a 5-year limited warranty.

Your online interface to comfort.

The icomfort Dashboard

This powerful website is the central command for your icomfort Wi-Fi, giving you access to the most detailed features and information in one convenient location. Once installed and registered, simply log on to www.myicomfort.com/dashboard and you'll have everything at your fingertips.



My Account – During the installation of your icomfort Wi-Fi, you'll create an online account to help manage and control every icomfort Wi-Fi you own. On the My Account screen, you'll have the ability to add and edit personal information and dealer information for each icomfort Wi-Fi you own.

Home(s) – This screen allows you to select which of your installed icomfort Wi-Fis you'd like to monitor or adjust, while giving you the ability to add additional icomfort Wi-Fi thermostats for different rooms or additional homes.

Current Indoor Temperature and Humidity – Check and adjust either setting with just a click or touch.

Away Mode – Easily sets your icomfort Wi-Fi to an energy-saving One-Touch Away Mode, so you don't waste energy heating and cooling an empty home.

Program – Set your icomfort Wi-Fi to a predefined schedule based on the season, or control the temperature manually.

Forecast – Check the five-day weather forecast.

Skins – Change the screensaver to a family photo, artwork or any color to blend in with your decor.

System – View or edit information about the system to which your icomfort Wi-Fi is connected.

Service Information – Edit information about your dealer, or email your dealer with questions or comments.

Alerts and Reminders – Stay on top of your system status by viewing any alerts or reminders for needed maintenance or service.

Easy-to-use touchscreen thermostat



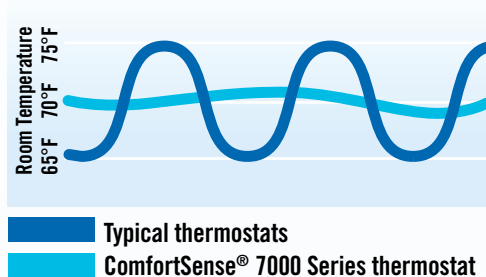
Comfort at your fingertips

Lennox' ComfortSense® 7000 Series touchscreen thermostat makes controlling your home's comfort so simple! With its intuitive touchscreen operation and flexible programming options, the ComfortSense 7000 thermostat is loaded with features designed to enhance your family's comfort and your heating and cooling system's performance. The ComfortSense 7000 thermostat helps you conserve energy, too, and that can reduce utility costs.

Precision temperature and humidity control

Typical thermostats allow wide temperature swings that can make your home either too hot or too cold. The ComfortSense 7000 thermostat makes it easy to maintain perfect temperature control, so your home always feels just right.

Temperature Swing Comparison



Humidity levels in your home are easy to control with the ComfortSense thermostat. Using the touchscreen, you simply set the humidity levels that are most comfortable for you. Then the thermostat works with your furnace, air conditioner and humidifier to add or remove moisture as needed.

Highlights

Ease of use. Large, touchscreen display is easy to read and simple to program.

Improved comfort. Flexible programming options let you design a heating and cooling schedule to match your family's lifestyle.

Optimal performance. On-screen reminders tell you when it's time for routine service or maintenance.

Peace of mind. Backed by a 5-year limited warranty.

ComfortSense 5000 Series

Programmable touchscreen thermostat



Effortless, efficient temperature control

Menu-driven programming screens with flashing prompts and up-and-down arrows allow you to easily customize comfort settings for your home. The ComfortSense® 5000 Series thermostat is compatible with almost any heating and cooling system.

Remote programming

Flexible in use and application, the thermostat mounts directly to a wall, but can be easily removed for remote programming. Optional battery power ensures continuous operation during power outages.

Highlights

Ease of use.

Touchscreen operation makes programming quick and simple.

Convenience.

Remote capability allows wall or armchair programming.

Peace of mind.

Backed by a 5-year limited warranty.

ComfortSense 3000 Series

Programmable & non-programmable thermostats



Accurate temperature control

ComfortSense 3000 Series thermostats offer easy-to-use control at a good price. Five-day/two-day programming allows you to customize a temperature schedule for the weekdays and weekend, with up to two time periods per day. A non-programmable model is available for ease of use in basic applications.

Easy to read and use

Large rubber buttons and a backlit display allow you to find the right setting, day or night. Once you've entered your settings, the thermostat accurately maintains the desired temperature.

Highlights

Ease of use. Backlit display and large buttons make the unit simple to operate.

Enhanced comfort. Advanced electronics deliver precise temperature control.

Peace of mind.

Backed by a 2-year limited warranty.

iHarmony™ Zoning System

The ultimate in efficient comfort



Temperatures and savings that feel ideal

The iHarmony Zoning System solves the problem of uneven or uncomfortable temperatures, while helping you reduce energy costs. You can keep your family perfectly comfortable and keep your home efficient, all while enjoying ultimate control and ease.

Comforting possibilities

For each of the four zones in your home, iHarmony allows you to program a different schedule for every day of the week ("7 day" setting) using an iComfort Wi-Fi® thermostat or in-zone thermostat. Thanks to the advanced capabilities of iComfort technology, you can even use your mobile phone, smart tablet or laptop to adjust settings from wherever you are.

Highlights

Precise comfort.

Four-area zoning makes your home feel welcoming to everyone, all year round.

Wireless access.

Designed for use with the iComfort Wi-Fi thermostat, which acts like the command center for all your home's zones.

Convenience.

In-zone thermostats let you override preprogrammed settings with a simple tap.

Peace of mind.

Backed by a 2-year limited warranty.

Harmony III™ Zoning System

Customized comfort for every corner of your home



Exceptional comfort

The Harmony III zoning system divides your home into up to four separate climate zones for the ultimate in home comfort. Designed for use with advanced heating and cooling systems, this system provides the desired temperature in each zone.

Optimal efficiency

When properly configured, the Harmony III zoning system can help to reduce your utility bills. It heats and cools only the rooms you are using, so it saves you money all year.

Highlights

Enhanced comfort.

Four-area zoning allows you to customize your comfort according to household needs.

Convenience.

Easy-to-use control panel makes it simple to adjust temperature and airflow throughout your home.

Peace of mind.

Backed by a 2-year limited warranty.

LZP-4 Zoning System

Room-by-room comfort control



Precise comfort

The LZP-4 zoning system works with standard heating and cooling systems to meet your home's specific comfort needs in up to four zones. It's like having an individual heating and cooling system for each living area.

Outstanding energy savings

The LZP-4 not only maximizes your comfort—it also saves you money, year after year. That's because you no longer have to pay to heat or cool areas of your home you rarely use.

Highlights

Enhanced comfort. Four-area zoning gives you greater control over your home's heating and cooling.

Savings. Reduced energy costs result from not having to constantly heat or cool rarely used rooms.

Peace of mind. Backed by a 2-year limited warranty.

LZP-2 Zoning System

Two-zone heating and cooling



Enhanced flexibility and control

The LZP-2 lets you divide your home into two separate zones. So if you have an upstairs floor that's always too hot, the LZP-2 lets you adjust heating or cooling in that area, without affecting the comfort of your downstairs living area.

Year-round energy savings

The LZP-2 can substantially reduce your energy costs when used with a programmable thermostat. The savings can translate to hundreds of dollars over the life of the system.

Highlights

Enhanced comfort. Two-area zoning gives you greater control over heating and cooling needs of your home.

Savings. Reduced energy usage can save you hundreds of dollars over the life of the system.

Peace of mind. Backed by a 2-year limited warranty.

Thermostats and Zoning Systems

Thermostats				
	icomfort Wi-Fi®	ComfortSense® 7000 Series Touchscreen	ComfortSense 5000 Series Touchscreen	ComfortSense 3000 Series Programmable and Non-Programmable
Feature Comparison		L7742U	L5732U, L5711U	L3532H, L3522C, L3511C, L3021H, L3011C
Remote Access	Via smartphone, tablet, laptop or any other web-enabled device			
Weather on Demand	Five-day forecast and weather alerts			
Customizable Skins	Match any color or pattern you currently have			
Scheduling Flexibility	Week/weekend, individual days or 7-day programming with up to 4 time periods per day	7-day programmable with up to 4 time periods per day	7-day programmable with up to 4 time periods per day	5-day programmable with up to 2 time periods per day and non-programmable available
Ease-of-Use Features	Icon-based interface that works like popular electronics; One-Touch Away Mode, vacation hold and temporary hold settings	Menu tabs allow you to quickly advance through programming options	User-friendly, ATM-like touchscreen allows effortless temperature control	Large rubber buttons allow simple touch operation
Humidity Control	Customizable indoor humidity	Removes up to 75 gallons of water per day when combined with select equipment		
Warranty	5-year limited warranty	5-year limited warranty	5-year limited warranty	2-year limited warranty

Zoning				
	iHarmony™ Zoning System	Harmony III™ Zoning System	LZP-4	LZP-2
Feature Comparison				
Zone Functioning	Up to four zones	Four- to two-zone control	Four- to two-zone control	Two-zone control
System Compatibility	Designed for use with variable speed heating and cooling equipment	Designed for use with variable speed heating and cooling equipment	Designed for use with standard heating and cooling equipment	Designed for use with standard heating and cooling equipment
LED Display	Touchscreen control	Indicator lights	Indicator lights	Indicator lights
Automatic Changeover Between Heating and Cooling	✓	✓	✓	✓
Vacation Mode	✓	✓	✓	
Warranty	2-year limited warranty	2-year limited warranty	2-year limited warranty	2-year limited warranty

Note: Warranties noted apply to residential applications only. See actual warranty certificate for details.



For a complete list of the registered and common law trademarks owned by Lennox Industries Inc., please visit www.lennox.com.